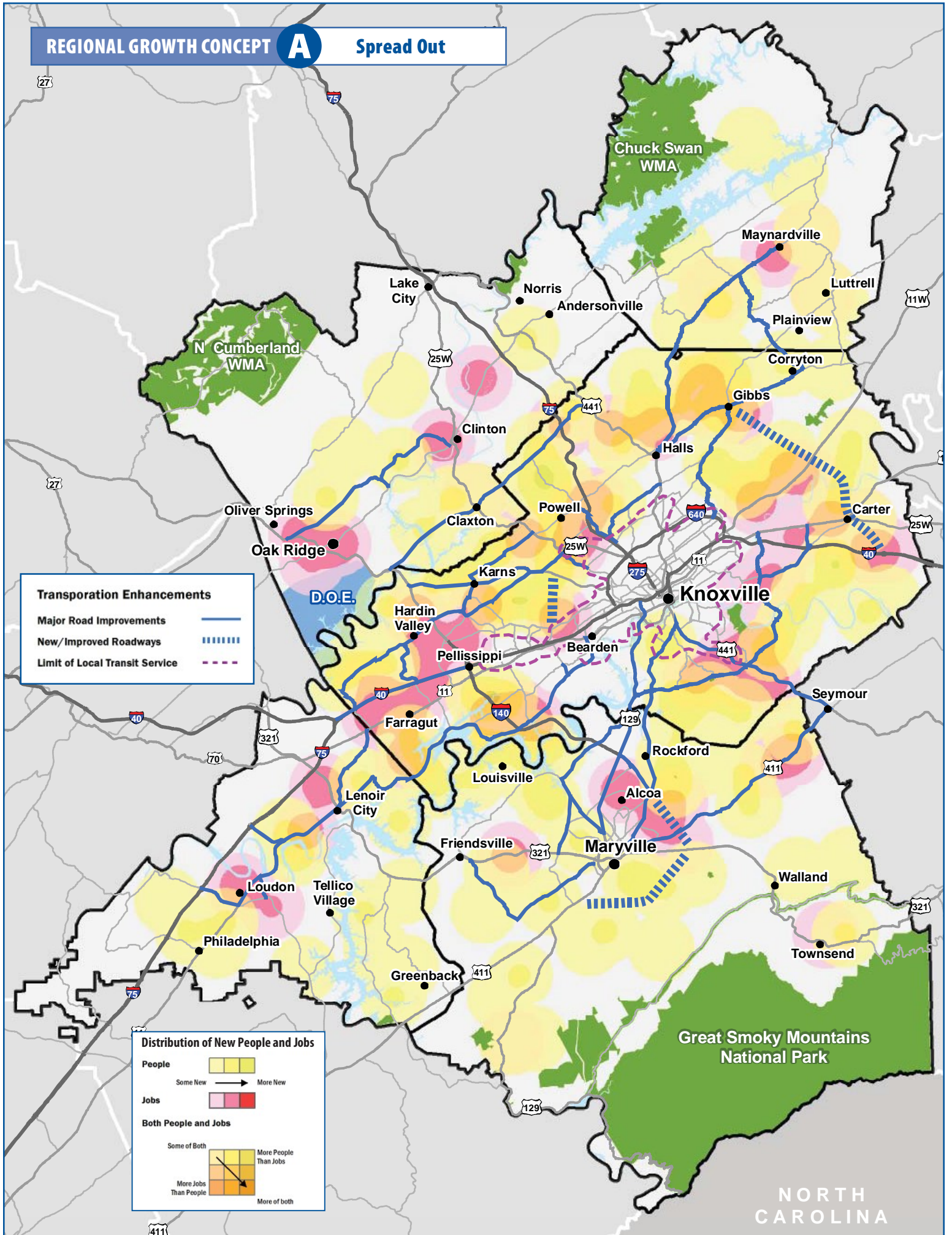


REGIONAL GROWTH CONCEPT

**A**

Spread Out



**Transportation Enhancements**

- Major Road Improvements ———
- New/Improved Roadways |||||
- Limit of Local Transit Service - - - - -

**Distribution of New People and Jobs**

**People**

Some New  →  More New

**Jobs**

→

**Both People and Jobs**

Some of Both  →  More People Than Jobs

→  More Jobs Than People

More of both

NORTH CAROLINA



## REGIONAL GROWTH CONCEPT

A

**Live** New homes are scattered throughout the region, primarily in suburban and rural neighborhoods. Housing is separated from employment and commercial areas. Some homes and subdivisions are designed around significant natural and cultural resources.

**Work** Jobs are located in existing cities and towns and also are spread around the region in clusters.

**Shop** Shops and services typically are located along major highways (in suburban shopping centers and office parks) or urban areas (in strip centers and small storefronts).

**Play** Regional recreation opportunities (e.g. lakes, rivers, and mountains) are near some rural and suburban homes. Some local parks, greenways and recreation centers are close to residential neighborhoods. Most residents access these facilities by car.

**Get Around** The car is the primary form of transportation. Some residents are able to access services and shopping by walking or transit. Schools service a wider area of the region, and most children take a bus or car ride to school. Greenways are used generally for recreation, not commuting.

## Spread Out

Growth occurs mainly in suburban and rural areas, with minimal growth in the region's cities and towns. New development is car-friendly and grows primarily into undeveloped areas. New homes are largely developed in suburban neighborhoods and on rural lots that were once farmland and open space.

### Features

- Different types of housing are available, but most new homes are single-family homes and apartments.
- Most people get to jobs, home, shopping, recreation, and school by car.
- Commutes are typically further for people living in rural and suburban areas.
- Local transit service remains as it is today.
- Road and utility infrastructure is expanded and extended into rural areas as needed, frequently "leapfrogging" close-in land that is left undeveloped.

### How this growth concept supports values found in the regional vision

- The development pattern promotes residential choice in terms of providing new housing in urban, suburban, and rural areas.
- Some development occurs close to natural areas and open space, which connects residents to nature.
- Investment is more dispersed around the region.