



**Round 3:
Public Input
Results**

Two questions

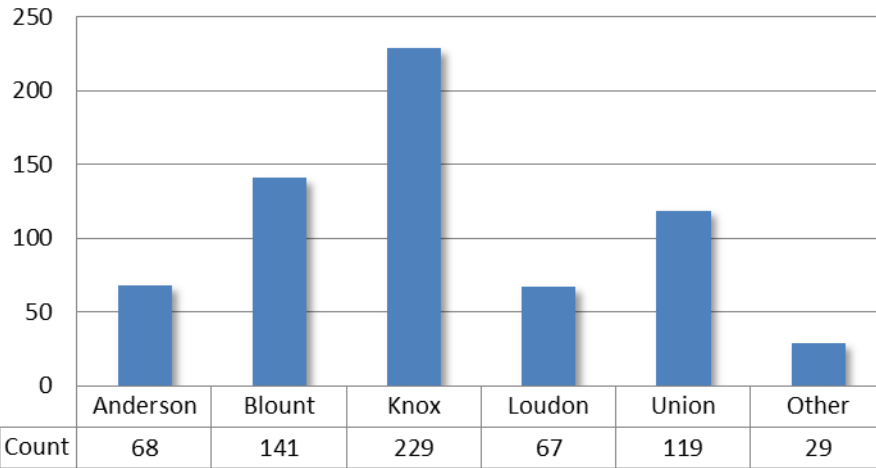
- Step 1: Rank Set of priority issues
- Step 2: Rate Growth Concepts

Round 3 Participation

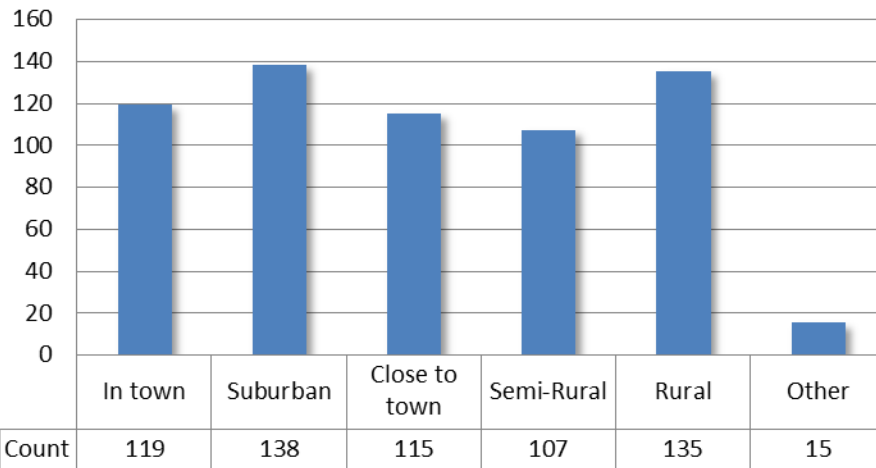
- Nearly 700 people via Meeting in a Box Tools
- 200 people via Internet
 - 500 visits to the site
 - 208 completed rankings
 - 94 rated at least 2 growth concepts (45%)
 - 78 rated 4 growth concepts (37%)

PlanET
Input Round 3
Overview

County of Residence

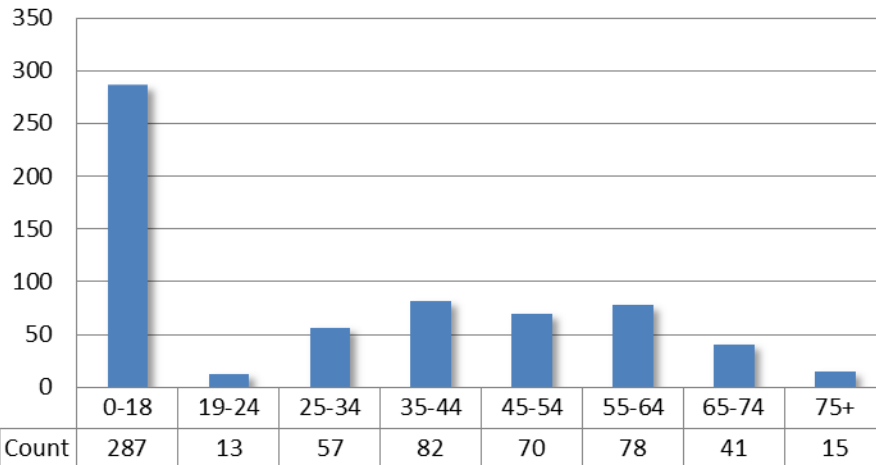


Neighborhood Type



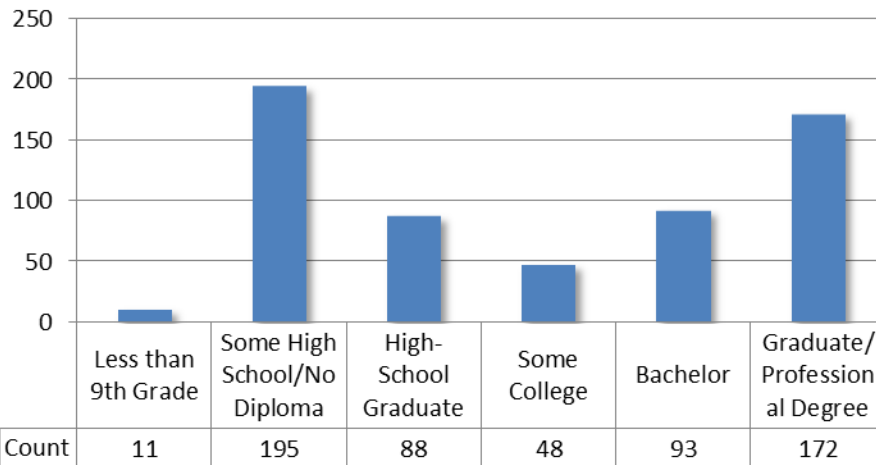
PlanET
Input Round 3
Demographics

Participant Age



- About 45% of the Round 3 participants were high school age students

Educational Attainment



PlanET Input Round 3 Demographics



WELCOME

2 Priorities What is important to you?

PRIORITIES



help



help

Higher
Priority



Drag your top 5 priorities above this line.

-
- Infrastructure Cost
- Traffic Congestion
- Local Agriculture
- Convenient Car Travel
- Air Quality
- Convenient Transit
- Walking and Bicycling
- Homes on Large Lots
- Redeveloping Land
- Water Quality
- Greenfield Development
- Choice of Housing Types
- Work Closer to Home

To accommodate the growth expected in our region while maintaining a high quality of life for all residents, we need to know what our priorities are. If we understand what matters most to us, we can make informed choices to achieve the outcomes we want.

From the list on the left, tell us what your highest priorities are for the region's future over the next three decades. Drag your top five priorities above the line. If you have time, you can prioritize the entire list. You also can suggest priorities not on the list.



Suggest a Priority

3

CONCEPTS

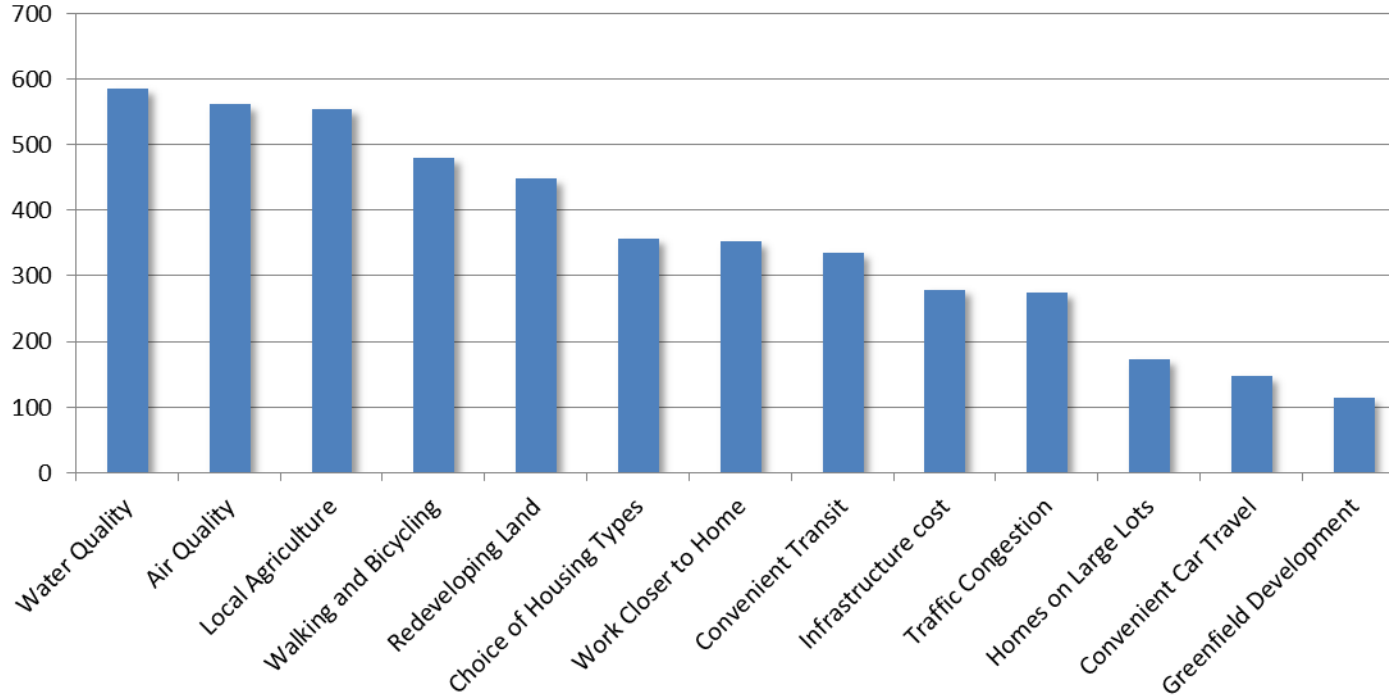
4

STAY INVOLVED

Share



Priority Ranking Identified in Top 5



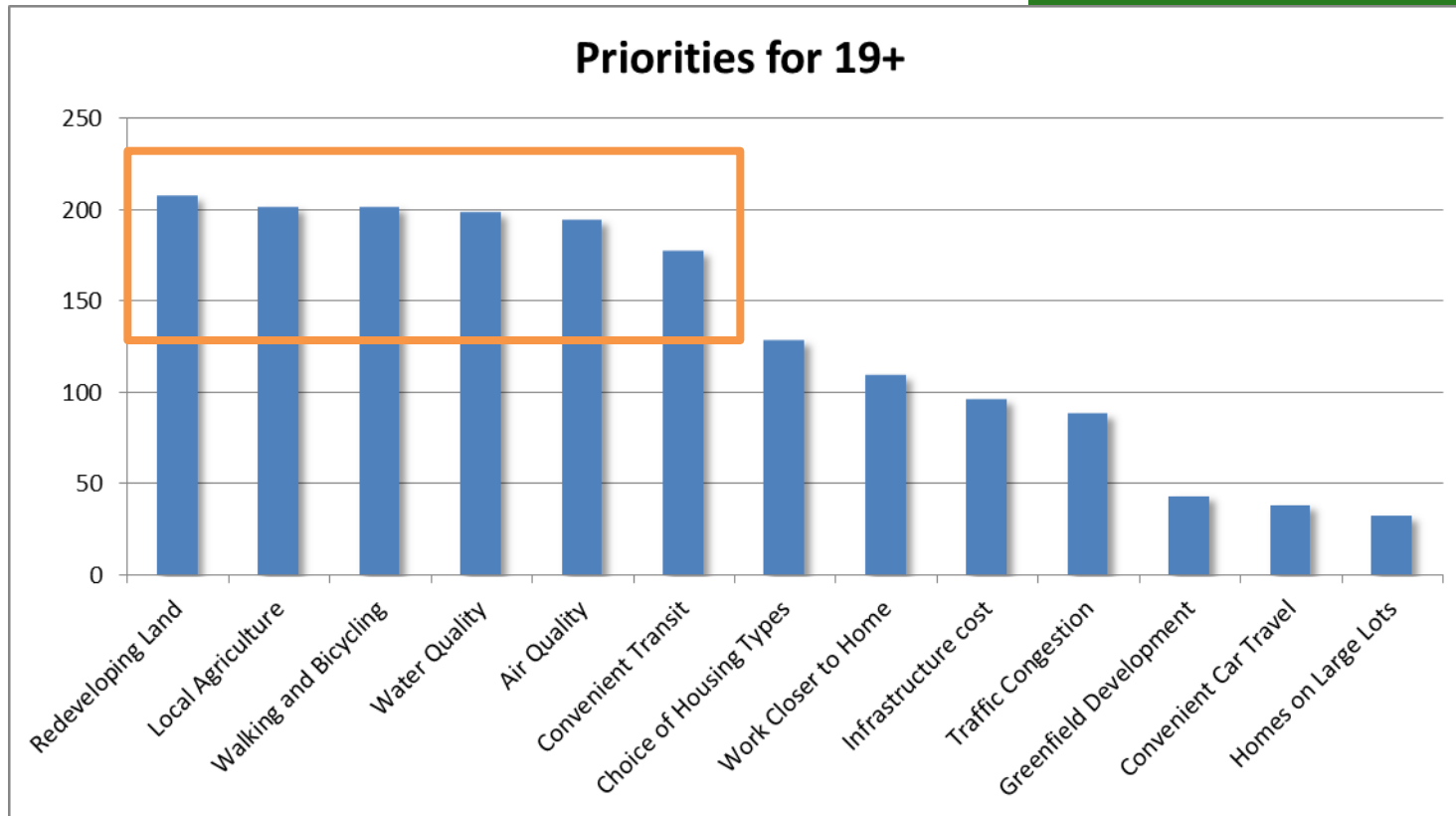
In 4 out of 5 counties, the top 3 priorities identified were some combination of:

- Water Quality
- Air Quality
- Local Agriculture

PlanET
Input Round 3
Priorities

		Anderson	Blount	Knox	Loudon	Union
①	Water Quality	②	②	①	①	①
②	Local Agriculture	③	①	③	②	②
③	Air Quality	④	③	②	③	③
④	Walking and Bicycling		⑤	④		
⑤	Redeveloping Land	①	④	⑤	⑤	⑤
⑥	Work Closer to Home				④	④
⑩	Infrastructure Cost	⑤				

PlanET Input Round 3 Priorities

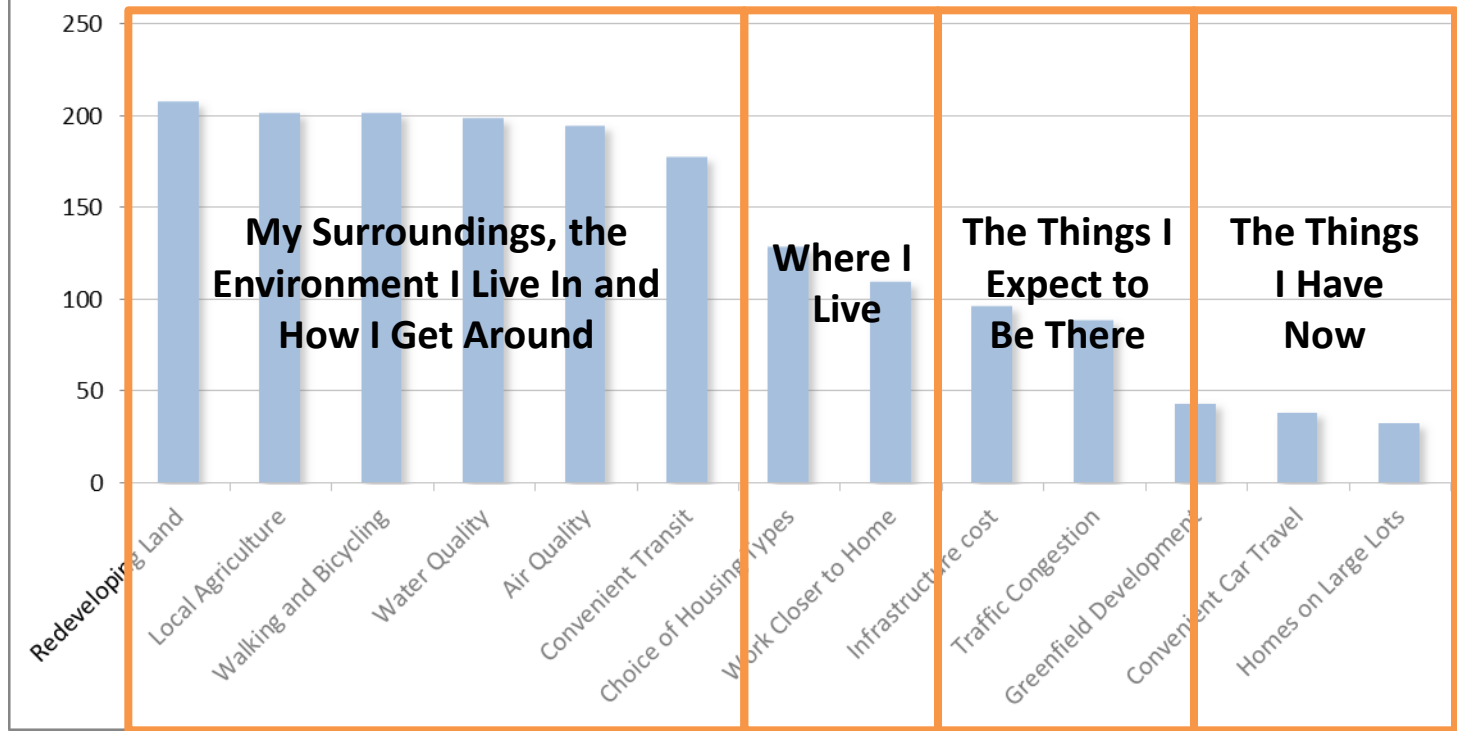


Isolating Respondents over age 18

- Redeveloping land jumps to from #5 to #1
- Convenient Transit moves upward in the list (82% of those selecting transit as a priority were over age 18)
- Clear set “place-based” priorities

PlanET
Input Round 3
Priorities

Priorities for 19+



PlanET
Input Round 3
Priorities



WELCOME

2

PRIORITIES

3

CONCEPTS



help

Choose

Trend

A: Spread Out

B: Corridors

C: Centers

D: Cities/Towns

4

STAY INVOLVED

Share



help

C: Grow New Centers

Growth is balanced between the region's cities and towns, and suburban communities.

New homes and jobs create centers of activity containing a mix of housing, shops, and services that are connected by several types of transportation. Regional transit connects the centers and local transit is improved.

[More about this concept...](#)

Rate this concept: ★★★★★

You have not chosen any priorities. At random:

Infrastructure Cost

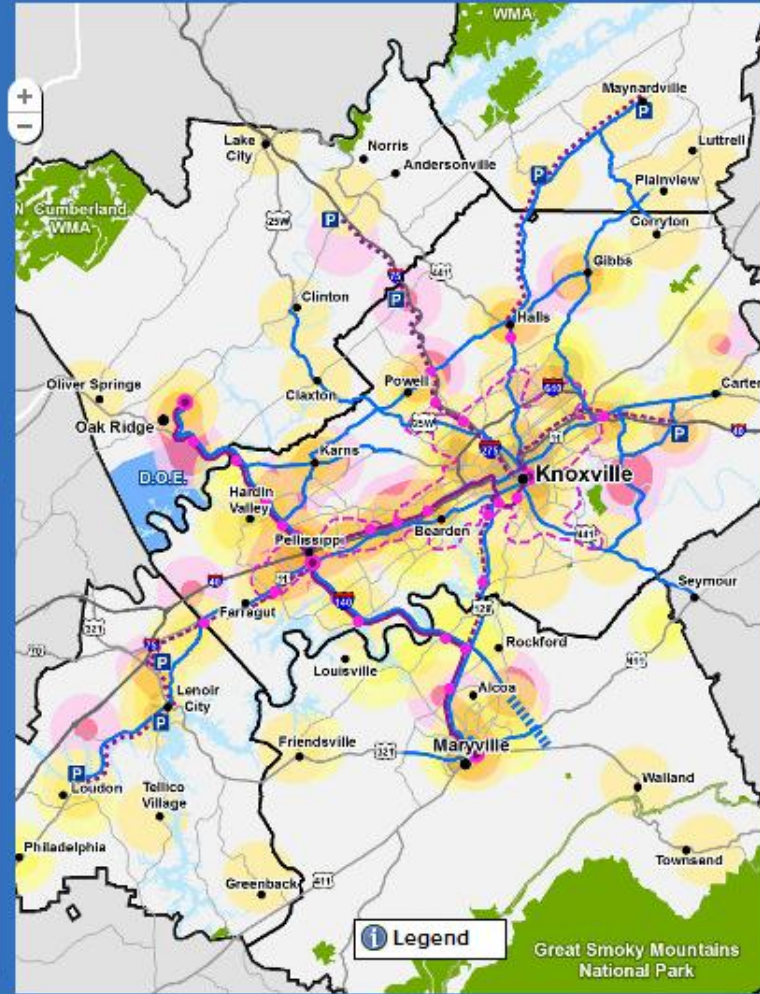
Traffic Congestion

Local Agriculture

Convenient Car Travel

Air Quality

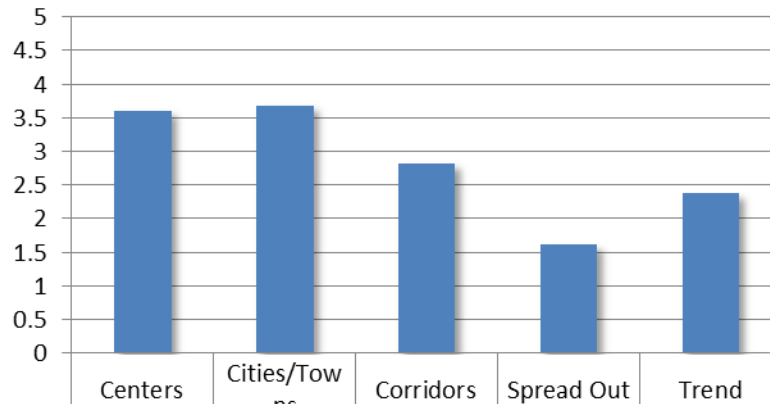
worse than trend better than trend



Legend

Great Smoky Mountains National Park

Average Rating

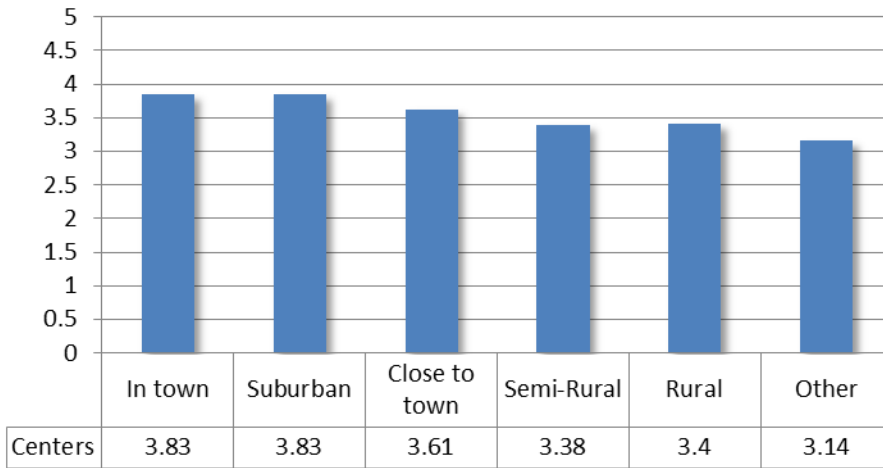


Average Rating	3.61	3.69	2.83	1.62	2.38
----------------	------	------	------	------	------

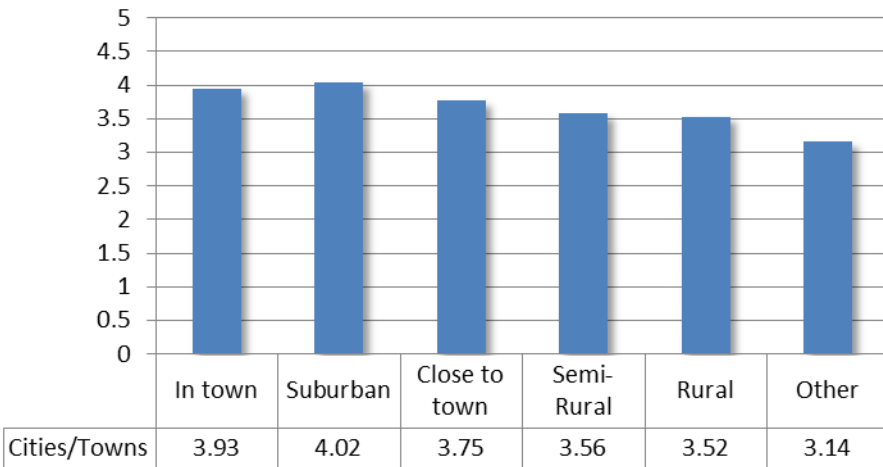
- **Support for Centers and Cities/Towns concepts strongest in Anderson County**
- **Less populous counties (Union and Loudon) showed less support for Cities and Towns and higher support for Corridors and Trend**
- **Spread Out Concepts least popular in all counties**

PlanET
Input Round 3
Demographics

Centers

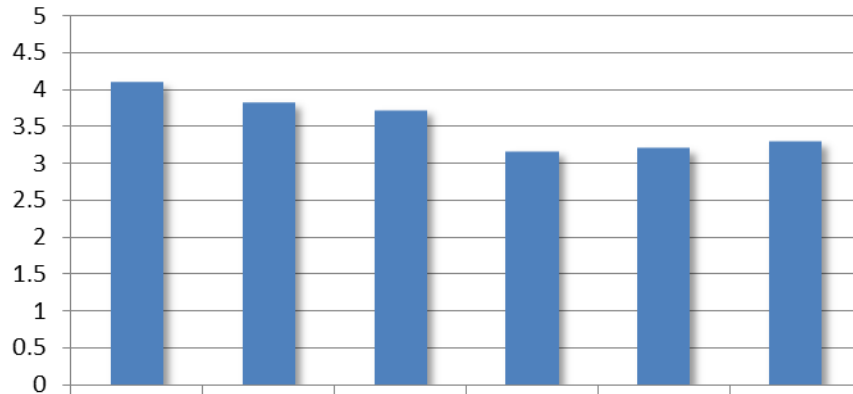


Cities/Towns



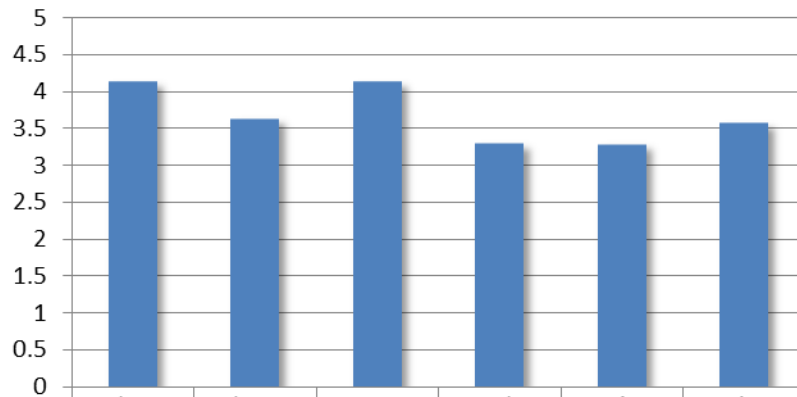
PlanET
Input Round 3
Concept Ratings

Centers



	Anderson	Blount	Knox	Loudon	Union	Other
Centers	4.09	3.82	3.72	3.16	3.2	3.29

Cities/Towns



	Anderson	Blount	Knox	Loudon	Union	Other
Cities/Towns	4.13	3.63	4.13	3.29	3.28	3.57

PlanET Input Round 3 Concept Ratings